

**THE
TERRITORY**
BIG RIVERS

**The Big Rivers
Region** has enough
space for your ideas
to come to life.



Contents

LIVE	4
The place	4
Weather	5
Transport	5
The people	5
HEALTH SERVICES	6
Aged care	8
WORK	9
Opportunities	9
Jobsites	10
LEARN	11
Schools and daycare	11
Student transfers	12
Enrolling at school	12
Financial assistance for students	12
THRIVE	13
Arts and culture	13
Sports	14
Events	14
Dining	14
Arts and culture	14
Shopping	14
Local attractions	14
Local services and amenities	15
MOVE	15
Housing and services	15
Renting	15
Buying	15



Live

The place

A spectacular iconic gorge at its centre paired with clear rivers, thermal springs, great camping and fishing, rugged escarpments and stunning landscapes...this is the Big Rivers region.

The Big Rivers region extends from the West Australian border to the Gulf of Carpentaria along the Queensland border.

The area features a number of popular watering holes such as the Daly Waters Pub and Pine Creek Hotel. The Big Rivers region is also home to 23 Aboriginal communities, 110 family outstations, 105 pastoral properties and six villages. These communities have a long and rich history in the area, and continue to practice traditional customs and beliefs.

The region is serviced by four Councils: the [Katherine Town Council](#), [Roper Gulf Regional Council](#), [Victoria Daly Regional Council](#) and [Central Desert Regional Council](#).

At the heart of the region is Katherine, the Territory's fourth largest town with over 11,000 of the region's 21,000 residents.

Katherine has a air conditioned shopping centre, its own hospital, high school, showgrounds, art galleries, sports precinct, museum, parks and gardens as well as a large number of Commonwealth and Territory Government services in addition to its own Hot Springs. The town is best known for the nearby and stunning Nitmiluk Gorge, the location of an impressive 13 gorges carved into ancient sandstone

Nearby well-known towns and attractions include [Daly Waters](#), [Pine Creek](#), [Timber Creek](#) and [Mataranka](#). Mataranka has a sandy bottomed thermal pool, making it a great spot for tourists and locals. Other popular activities include fishing, camping, bushwalking, bird watching, and exploring the many Aboriginal cultural experiences.

Weather

The Big Rivers region experiences monsoonal rains as part of a short wet season from December to April, and breezy sunny days as part of a long dry season from May to September.

Transport

Katherine is 315 km south of Darwin and easily accessible by air, rail and road all year round. Katherine is located at the crossroads of the top end, connecting the Perth-Darwin national highway link from the west to the intermodal Adelaide-Darwin north-south highway and rail corridor. It is the critical cross road of Northern Australia.

The Katherine Tindal Civilian Airport is located approximately 15 km south of town, along the Stuart Highway. The terminal is open 24 hours a day and 7 days a week for the convenience of all industry users.

Transport to the Roper Gulf Region is via the Stuart Highway, Central Arnhem Road and Roper Highway with buses also available to the area.

The Victoria Daly region is serviced by the Buchanan Highway, Stuart Highway and Victoria Highway with buses also available to the area.

Bus and coach services regularly travel to Katherine from Alice Springs, Darwin and Western Australia. For information about tickets, schedules and fares, visit local visitor information centres and transport hubs at www.greyhound.com.au for details.

Katherine Coaches provides regular remote area bus services, providing services to most major regional communities and villages such as [Numbulwar](#), Ngukurr, [Minyerri](#), [Borroloola](#), [Lajamanu](#), [Kalkarindji](#), [Timber Creek](#), [Bulman](#), and Darwin as well as remote outstations at passengers requests. Find out more at www.katherinecoaches.com.au

Permits

A permit is required to visit any Aboriginal land in the Northern Territory.

For more information on permits in region, visit the Northern Land Council at nlc.org.au/apply-for-permit or the Central Land Council at clc.org.au

The people

Big Rivers people are friendly, resourceful and adventurous. With a strong connection to community, you will find people in the region are always willing to help others and [treat friends as family](#).

During WWII, Katherine was an important staging post in the defence of the Top End. Today, RAAF Base Tindal just south of Katherine is one of Australia's most important strategic locations with many defence personnel living and working in Katherine and the region.

A number of government services are supplied by the [Katherine Town Council](#) whose website contains more information about the area.

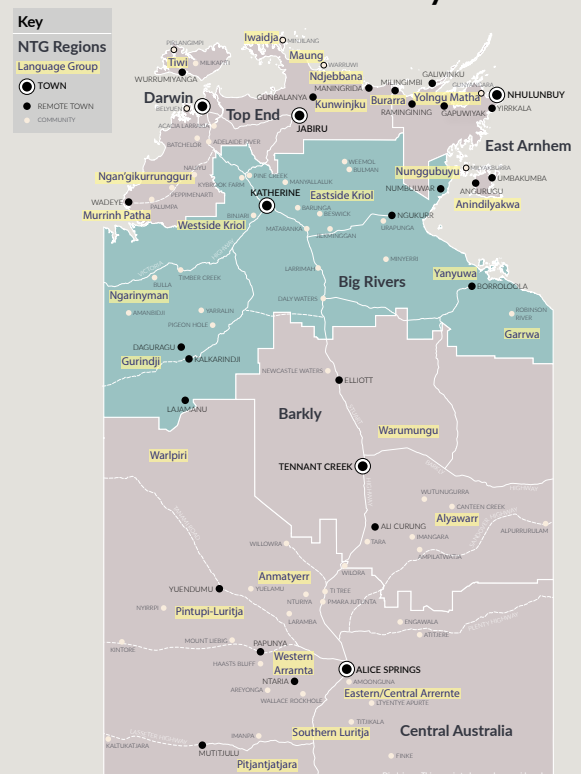
The [Roper Gulf Regional Council](#) area is mostly home to Aboriginal people who live in major communities such as [Ngukurr](#) and [Barunga](#) and is home to the townships of Borroloola & Mataranka.

The [Victoria Daly Regional Council](#) area is inclusive of two major defence training areas and a number of villages and Aboriginal communities including [Kalkaringi](#), [Pine Creek](#), [Timber Creek](#) and [Yarralin](#). More than half of the population of these areas identify as Aboriginal.

Aboriginal language groups

The term "language group" is used often to describe different groups of Aboriginal people because they themselves identify by their language.

Major Aboriginal languages of the Northern Territory



Health Services and contact details

In the event of an emergency, dial 000 for emergency services.

Katherine Hospital is a 60 bed non-specialist public hospital providing emergency medical, surgical, paediatric and maternity services.

Katherine services the surrounding communities via specialist outreach health services.

The Katherine Family Medical Practice and Bauhinia Health are private general practices providing health services to the local area.

The Wurli-Wurlinjang Aboriginal Health Service is Katherine's only Aboriginal Community Controlled Health Service with the Sunrise Health Service and Katherine West Health Board servicing the remote areas within the Big Rivers region.

You can search for specific health care services at nt.gov.au/wellbeing

Remote Health Care Facilities in the Big Rivers Region

Location	Phone	Opening hours	Operator
Amanbidji (Kildurk)	08 9167 8842	Tuesday 10am to 2pm	Katherine West Health Board Aboriginal Corporation
Barunga (Bamyili)	08 8975 4501	8am to 4:30pm	Sunrise Health Service Aboriginal Corporation
Binjari	08 8971 0970	8:30am to 4pm	Wurli Wurlinjang Health Service
Borrooloola	08 8975 8757	9am to 5pm Emergencies 24/7	NT Health
Bulla	08 9168 7303	Monday, Wednesday and Friday 10am - 2pm	Katherine West Health Board Aboriginal Corporation
Daguragu (Wattie Creek)	08 8975 0785		Katherine West Health Board Aboriginal Corporation
Bulman Gulin Gulin	08 8975 4712	8am to 4:30pm	Sunrise Health Service Aboriginal Corporation
Jilkminggan (Duck Creek)	08 8975 4741	8am to 4:30pm	Sunrise Health Service Aboriginal Corporation
Kalkaringi (Wave Hill)	08 8975 0785	Monday to Thursday 8:30am to 4pm Friday 1pm to 4pm Emergencies 24/7	Katherine West Health Board Aboriginal Corporation
Lajamanu (Hooker Creek)	08 8975 1500	Monday to Thursday 8:30am to 4pm Friday 1pm to 4pm Emergencies 24/7	Katherine West Health Board Aboriginal Corporation

Location	Phone	Opening hours	Operator
Manyallaluk (Eva Valley)	08 8975 4864	9am to 5pm Emergencies 24/7	Sunrise Health Service Aboriginal Corporation
Mataranka	08 8975 4547	8am to 4:30pm	Sunrise Health Service Aboriginal Corporation
Minyerri (Hodgson Downs)	08 8975 9959		Sunrise Health Service Aboriginal Corporation
Ngukurr (Roper River)	08 8975 4688	8am to 4:30pm	Sunrise Health Service Aboriginal Corporation
Numbulwar	08 8975 4670	Monday, Tuesday, Wednesday and Friday 9am to 12pm Thursday 1pm to 4pm	NT Health
Nitjpurru (Pigeon Hole)	08 8975 0910	Tuesday 10:30am to 4pm Wednesday 8:30am to 4pm Thursday 8:30am - 2pm	Katherine West Health Board Aboriginal Corporation
Pine Creek	08 8976 1268	Tuesday 9am to 3pm	NT Health
Robinson River	08 8975 9985	8am to 5pm	NT Health
Timber Creek	08 8975 0727	Monday to Thursday 8:30am to 4pm Friday 1pm to 4pm Emergencies 24/7	Katherine West Health Board Aboriginal Corporation
Urapunga (Rittarrangu)	08 8975 4345		Sunrise Health Service Aboriginal Corporation
Wugularr (Beswick)	08 8975 4527		Sunrise Health Service Aboriginal Corporation
Yarralin	08 8975 0893	Monday to Thursday 8:30am to 4pm Friday 1pm to 4pm Emergencies 24/7	Katherine West Health Board Aboriginal Corporation

Dental services

Katherine Dental Clinic [08 8922 6466](tel:0899226466)

Big Rivers Government Centre
5 First Street
Katherine NT 085

Visiting dental services in remote towns

If you live in a remote town you can access dental services from visiting and mobile dental clinics. To find out when dentists are visiting your town, contact your local remote health clinic at nt.gov.au/wellbeing/remote-health/remote-health-services.

Aged Care

The aged care assessment program provides support to eligible people who need Australian Government services such as:

- residential aged care or respite
- home care packages, and
- transition care program for older people after a hospital stay.

To access this program, you must be Aboriginal and 50 years old and over, or non-Aboriginal and 65 years old and over.

For more information, call the Australian Government's My Aged Care on [1800 200 422](tel:1800200422) or go to the Australian Government's [My Aged Care website](https://myagedcare.gov.au) at myagedcare.gov.au.

There are a range of aged care services available in the Big Rivers region which offer a range of services and culturally appropriate settings.

For more information visit katherine.nt.gov.au/listings/community.

Aged Care (Alawa Aboriginal Corporation)
(08) 8975 9797
alawa@bigpond.com

Aged Care (Home Care Services) (Life Without Barriers)
(08) 8972 7502
ntadmin@lwb.org.au
lwb.org.au

Aged Care (Roper Gulf Regional Council)
(08) 8972 9000
info@ropergulf.nt.gov.au
ropergulf.nt.gov.au

Aged Care (Victoria Daly Regional Council)
(08) 8972 0777
admin@vicdaly.nt.gov.au
victoriadaly.nt.gov.au

Commonwealth Home Support Program (Kalano Community Association Inc.)
(08) 89722588
kalano.org.au

Community Home Support Program (CHSP) (NT Friendship and Support)
(08) 8971 0027
admin@ntfriendship.org.au
ntfriendship.org.au

Community Visitors Scheme (Anglicare NT)
(08) 89636100
anglicare@anglicare-nt.org.au
anglicare-nt.org.au

Elders Visitation Program (Mission Australia)
(08) 8965 1000
katherine@missionaustralia.com.au
missionaustralia.com.au

Kalano Flexible Care (Australian Red Cross)
(08) 89711999
redcross.org.au

Malandari Aged Care and Community & Home Support Program (Mabunji Aboriginal Resource Association)
(08) 8975 6700
info@mabunji.com.au
mabunji.com.au

Meals on Wheels and HACC Services (Anglicare NT)
(08) 89636100
anglicare@anglicare-nt.org.au
anglicare-nt.org.au

Residential Respite in an Aged Care Facility (Carers NT)
Free call: 1800 242 636
katherinerespite@carersnt.asn.au
carersnt.asn.au

Rocky Ridge Nursing Home
(08) 8972 3399
arrcs.org.au





WORK

Opportunities

The Big Rivers region is experiencing a period of economic growth which is driving entrepreneurial opportunities and an increased need for a skilled [workforce](#).

The region has a broad-based economy with agriculture, forestry, fishing, beef cattle export, resource industries, tourism, Defence and defence support industries and government service delivery.

Significant projects are underway, including \$1.2 billion RAAF base Tindal civil and construction projects, Katherine Logistics and Agribusiness Hub, Katherine East Neighbourhood Centre, On-Shore Gas exploration, Roper Valley Iron Ore project, McArthur River Mine, Cotton Gin and \$1.1 billion Remote Housing Investment Package.

The region has a significant defence presence, including the Royal Australian Air Force's (RAAF)



Base Tindal, Bradshaw Field Training Area and Delamere Air Weapons Range.

Mining activity in the region includes gold and other minerals around Pine Creek and zinc and lead around Borroloola. The region also includes the gas rich Beetaloo Sub-basin, which lies between Katherine and Tennant Creek. The Big Rivers mining sector had the highest worker productivity by industry in the Northern Territory at \$178,070 per worker.

The Northern Territory Government is the major employer in the Big Rivers Region, you can search employment opportunities in government at jobs.nt.gov.au

Northern Territory Government jobs

Sector	Website
Health	health.nt.gov.au/careers
Police	pfes.nt.gov.au/join-us
Teaching	education.nt.gov.au/education/careers-in-education
TourismNT	tourismnt.com.au/about-us/careers.aspx

Key job websites

Key job sites	Website
Seek	seek.com.au/jobs/in-Northern-Territory-NT
Indeed	au.indeed.com/jobs-in-Northern-Territory
Adzuna	adzuna.com.au
Australian jobsearch	workforceaustralia.gov.au
Jobs in Australia's Northern Territory	jobs.theterritory.com.au

Defence jobs

Defence jobs	Website
Australian Army	army.defencejobs.gov.au
Royal Australian Air Force	airforce.defencejobs.gov.au
Royal Australian Navy	navy.defencejobs.gov.au

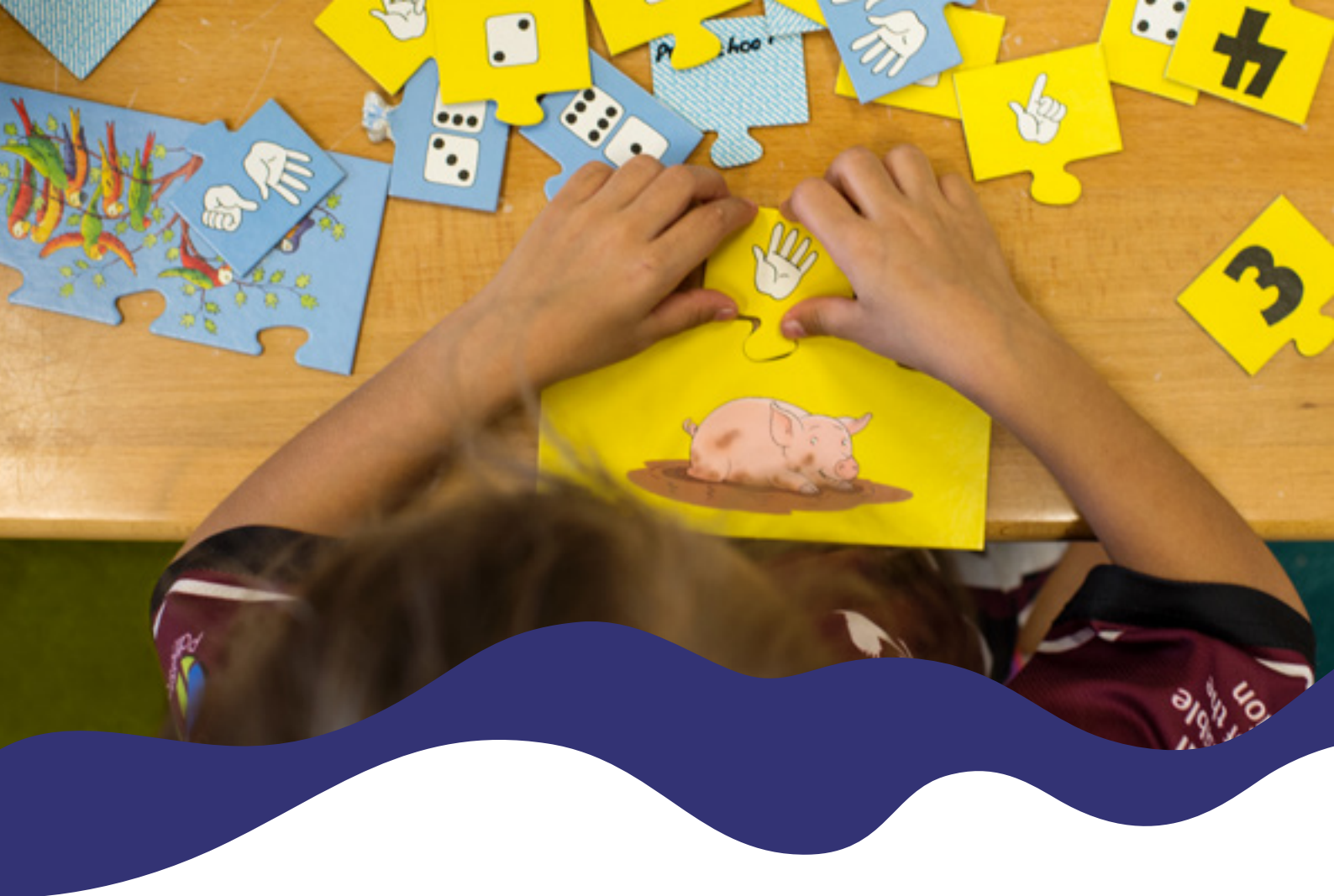
Peak industry associations

Industry associations often have job listings on their websites

Peak industry associations	Website
The Chamber Of Commerce NT	chambernt.com.au
Master Builders NT	mbant.com.au
Minerals Council Of Australia NT Division	minerals.org.au/careers
Cpa Australia	cpaaustralia.com.au
Australian Hotels Association (NT)	ahant.com.au
Engineers Australia Northern Division	engineersaustralia.org.au
Property Council Of Australia NT Division	propertycouncil.com.au

Local Government Councils

Often have job listings available on their website. Their peak body Local Government Association NT ([LGANT](#)) has links to all Council websites.



LEARN

Schools and Daycare

School term and holiday dates differ to other States with a longer mid-year break of 3 weeks.

There are 4 terms in the school year and, most government schools follow the same term dates with the exception of some remote schools.

School term dates are available here: nt.gov.au/learning/primary-and-secondary-students/school-term-dates-in-nt.

If your child attends a [non-government school](#), check the term dates with the school.

Territory schools generally hold classes between 8am and 3pm. All Government schools are co-educational.

In the Northern Territory there are three stages of schooling which are:

- Primary - transition to Year 6
- Middle - Year 7 to Year 9
- Senior - Year 10 to Year 12.

There are six day cares in Katherine including Kentish Lifelong Learning & Care Inc, Little Mangoes, Little Joeys, Na-Wulg Wulg Child Care Centre, Little Geckos and Katherine East Day Care.

There are 4 public primary schools located in Katherine - Katherine South Primary School, Clyde Fenton Primary School, Macfarlane Primary School and Casuarina Street Primary School.

Each of these schools also has a preschool attached.

Katherine also has 2 high schools – 1 public, and 1 private. Katherine High School is the public high school, catering for years from 7 – 12. St Joseph's Catholic College is the private school, providing education from prep to year 12.

There is 1 specialist school, [Kintore Street School](#) which ranges from prep to year 12.

Katherine also has a distance education school, Katherine School of the Air. This school has over 250 students over an area of 800,000 kilometres catering to primary and middle year student in remote or isolated areas.

School	Address	Contact
Katherine South Public School	120 Riverbank Drive Katherine South NT 0850	(08) 8972 1277 admin.kathesch@education.nt.gov.au
Clyde Fenton School	22 Rapide Street Katherine NT 0850	(08) 8973 3844 admin.clydesch@education.nt.gov.au
MacFarlane Primary School	42 Grevillea Road Katherine East NT 0850	(08) 8965 1700 admin.macfasch@education.nt.gov.au
Casuarina Street School	123 Casuarina Street Katherine East NT 0850	(08) 8973 3800 casuarina.admin@education.nt.gov.au
Katherine School of the Air	101 Giles Street Katherine NT 0850	(08) 8965 1555 kath.soa@education.nt.gov.au

Discover schools in the Big Rivers Region at nt.gov.au/learning/primary-and-secondary-students/list-of-urban-and-remote-schools. [Callistemon House](#) is a boarding option for remote students in Katherine.

Student transfers

If transferring from one school to another, your child's records will automatically transfer between government schools in the Territory.

If your child is transferring to a non-government school, your written consent must accompany any request.

Enrolling at school

You can complete a student enrolment form [online](#) or in person at your child's new school. Enrol your child at nt.gov.au/learning/primary-and-secondary-students/enrol-your-child-at-school.

If enrolling in preschool you must also complete the supplementary preschool enrolment form.

The Northern Territory Government, in partnership with education providers, offers Study in Australia's Northern Territory Scholarships to talented students. The scholarships are for vocational education and training, higher education, and schools.

For more information on studying and living in the Northern Territory, visit the Study NT website at theterritory.com.au/study.

Financial Assistance for students

You may qualify for a range of financial assistance available to support Learning in the NT including:

- Scholarships
- HELP fees
- VET fee help,
- Austudy
- Abstudy
- Youth Allowance
- Assistance for Isolated Children
- Back to school payment scheme
- School Sport Vouchers

You can learn more about support available to you at nt.gov.au/learning/student-financial-help-and-scholarships

[CDU Campus](#) offers TAFE programs and supports Katherine students studying higher Education and Research.



THRIVE

Arts and Culture

[Mimi Aboriginal Art and Craft](#) in Katherine has been recently upgraded to enhance all aspects of the building, including the gallery, artists' studio, retail space, and office and storage areas, as well as improving the building's energy efficiency. [Godinymayin Yijard Rivers Arts & Culture Centre](#) has also recently upgraded facilities both upgrades were possible by Arts Trail funding grants.

Don't miss a visit to the award winning [Top Didj Cultural Experience & Art Gallery](#).

Galleries in Katherine specialise in locally produced works from across the region reflecting the styles and influences of the Aboriginal people in the Big Rivers. As well as viewing and purchasing artwork, visitors can watch and participate in art and craft being produced, from didgeridoos and boomerangs, to weaving, dilly bags, clap sticks and art.

Remote Art Centres include Ngukurr Arts, Numbulwar Numburindi Arts, Warnayaka Art, Karungkarni Art and Culture, Djilpin Arts and Waralungku Arts.

Festivals are a huge part of Katherine's cultural identity and they range from the Katherine Canoe Marathon and Katherine Country Music Muster, Barunga & Freedom Day Festival, to the Pine Creek Goldrush Festival. There are also a range of community fishing, horse racing and rodeo events and even sunset catered river cruises. Katherine's calendar is filled with unique events that draw locals and out-of-towners to the region.

Museums in Katherine offer great insight into Aboriginal and post-European settlement history. As well as the establishment of the Katherine Telegraph Station, the building of the railway, gold mining and the establishment of police and infrastructure.

There is more information [here](#) on facilities in the region.

Sports

As the hub for the Big Rivers region, Katherine boasts good quality sporting facilities, including:

- Four multipurpose ovals, 3 of which are illuminated for night time use;
- Newly upgraded BMX track;
- Basketball/Netball Courts;
- Tennis Courts;
- Skate Park;
- Children's Adventure Playground;
- Aquatic Centre
- Softball field;
- YMCA
- BMX track
- Cricket field
- Motorsports club

The National Indigenous Australians Agency (NIAA), Roper Golf Regional Council and the Northern Territory Government partner to deliver sport and recreation programs in Barunga, Beswick, Borrooloola, Bulman, Jilkminggan, Manyallaluk, Mataranka, Ngukurr, Numbulwar and Urapunga.

Learn more about the wide variety of sports on offer in region at nt.gov.au/leisure/sport

Events

There are a number of festivals and events as mentioned previously.

The Annual Barunga Festival is a remote festival located in Barunga that celebrates the region and supports remote indigenous communities coming together. The iconic event attracts thousands of locals and visitors to the small remote community to camp and take part in a 3-day long weekend filled with music, sport and culture. The Freedom Day Festival & Never Never Festival are also must see events in the region.

The Gurindji Freedom Day Festival; commemorates the iconic and monumental "Wave Hill Walk-off". This sparked a significant milestone for Aboriginal Land Rights movement across Australia. The event highlights the Gurindji people's hardship, bravery and endurance.

Events also include the Katherine Show and a range of sporting activities.

Dining

You will not be starved for choice when it comes to the variety of [dining options](#) in Katherine. Choose from the popular Katherine Golf and Country Club or the award winning Cicada Lodge or alternatively there are approximately 30 bars and eateries to choose from in Katherine including major fast food chains.

Visit Mataranka, Victoria River Roadhouse, Timber Creek, Borrooloola, Pine Creek and Daly Waters regions for more variety!

Shopping

There are local stores in most communities and towns. A large Woolworths is located in Katherine Central Shopping Centre in the heart of Katherine, open 7 days as well as boutiques, salons, speciality retailers and home furnishing retailers across Katherine CBD

Local attractions

The Katherine township is the gateway to the world-famous Nitmiluk National Park. Here you can explore gorges, waterfalls, freshwater springs and ancient culture.

Nitmiluk is the Jawoyn name for Katherine Gorge. It is pronounced Nit-me-look, and means Cicada Place. Nitmiluk Gorge can be found in the Nitmiluk National Park.

Other attractions include the Cutta Cutta Caves Nature Park, Katherine Hot Springs, the Katherine township, Katherine Museum, Godinymayin Yijard Rivers Arts and Culture Centre, Mimi Aboriginal Art & Craft, Top Didj Cultural Experience & Art Gallery, Katherine Outback Experience, [O'Keefe House](#), Katherine Country Club, Katherine Aquatic Centre, Henry Scott Recreation Centre, Low Level Nature Reserve, Katherine Showground and the Katherine River.

Roper River major attractions include Barranyi (North Island) National Park, Elsey National Park (including Mataranka Thermal Pool and Bitter Springs), Nitmiluk National Park (including Leliyn (Edith Falls) and Katherine Gorge), part of Kakadu National Park, Limmen National Park, Limmen Bight Marine Park, Pungalina-Seven Emu Station, Wongalara Wildlife Sanctuary, Larrimah Museum, Never Never Museum, Stockyard Gallery, McArthur River Mine, the Roper River, and various beaches, islands, lodges and camps.

Victoria Daly major attractions include Judbarra/ Gregory National Park (including Limestone Gorge), Keep River National Park, Umbrawarra Gorge Nature Park, Giwining/Flora River Nature Park, Pine Creek Railway Station & Train Museum, Bullo River Station, and the Victoria River.

Local Services

There are 1 library, 3 banks and 4 ATMS, a post office and a police station plus mechanics, fuel stations, a variety of accommodation options, a public pool and more in Katherine.

Community Amenities

Visit bushtel.nt.gov.au to gain an understanding of what is available in each of these regional communities:

- [Kalkarindji \(https://bushtel.nt.gov.au/profile/603\)](https://bushtel.nt.gov.au/profile/603)
- [Timber Creek \(https://bushtel.nt.gov.au/profile/18974\)](https://bushtel.nt.gov.au/profile/18974)
- [Mataranka \(https://bushtel.nt.gov.au/profile/23547\)](https://bushtel.nt.gov.au/profile/23547)
- [Ngukurr \(https://bushtel.nt.gov.au/profile/633\)](https://bushtel.nt.gov.au/profile/633)
- [Borroloola \(https://bushtel.nt.gov.au/profile/11092\)](https://bushtel.nt.gov.au/profile/11092)



MOVE

Housing and suburbs

The Big Rivers region and specifically Katherine has a wide variety of family homes for rent and sale. There's opportunity to secure your own piece of land and build a home yourself.

Renting

The average rental price per month in Katherine is \$500 per week. With 37% of homes in Katherine listed as rentals there is an average 1.5% vacancy rate at any given time, so securing accommodation is a critical part of your move plan.

For information on the real estate market in the Northern Territory read the [REINT's real estate local market publication](#). Check your favourite online real estate website for accommodation options.

Buying

The median house price in Katherine is \$395,000 and the market offers entry level affordable homes through to unique and deluxe new builds.

The Northern Territory Government offers a range of assistance to home owners to enter the market and and/or build new homes, you can learn more at nt.gov.au/property with new land availability at Katherine East Neighbourhood Centre and Casuarina Park Stage 3.

Estimated Moving Expenses to Katherine

The below graphic showing the average cost to move your personal possessions to Katherine.

Place of origin	Estimate for moving service
Adelaide	\$7,000 - \$13,000
Brisbane	\$7,000 - \$13,000
Melbourne	\$7,000 - \$13,000
Perth	\$10,000 - \$15,000
Sydney	\$9,000 - \$14,400

For information on the real estate market in this area, check your favourite online real estate website for accommodation options, or visit realestate.com.au

